



Blundell's

PREPARATORY SCHOOL



Current Information

[ADMISSIONS](#) / [SUBJECTS](#) / [SPORTS](#) / [ACTIVITIES](#) / [FEES](#) / [TERM DATES](#)

2023/2024

CONTENTS

WELCOME FROM THE HEAD MASTER	3
ABOUT BLUNDELL'S	4
ADMISSIONS	6
ENTRY INTO THE SENIOR SCHOOL	7
FEES	8
SCHOOL AIMS	10
PASTORAL	11
SCHOOL COMMUNITY (INCLUDING FRIENDS OF BLUNDELL'S PREP AND PARENT LIAISON)	12
NURSERY DEPARTMENT	13
PRE-PREP DEPARTMENT	14
PREP DEPARTMENT	16
CURRICULUM AIMS AND SUBJECTS	18
SPORT	20
MUSIC	21
DRAMA	22
TECHNOLOGIES	23
OUTDOOR LEARNING	24
AFTER SCHOOL PROVISION	25
ENRICHMENT/GAT	26
SEN	26
MINIBUS ROUTES	27
FAQ'S	28
TERM DATES	30
POLICIES	30
USEFUL CONTACTS	31



WELCOME

I believe that we are a school which embraces the traditional values of family life along with a strong academic ethos. From the moment you walk into the school you will find a tangible sense of community and a passionate approach towards the development of every child in our care.

Whilst academic pursuits are a critical part of each child's school life, we recognise that growing up is much more than just time spent in the classroom. At Blundell's Prep the message to the children is clear. We want you to try everything, to find your passion and to become the very best person that you can be. You will find inspiration in the classroom, in the drama studio and on the games field. You will find it in Music, in Art and in the wonderful friendships that you will make.

In addition to their usual creative and stimulating lessons, pupils enjoy using the Hub, a state of the art outdoor classroom. We want every child to feel that they belong here and the school's motto 'Non Sibi' encourages values of courtesy, empathy and selflessness which combine to create a very special atmosphere.

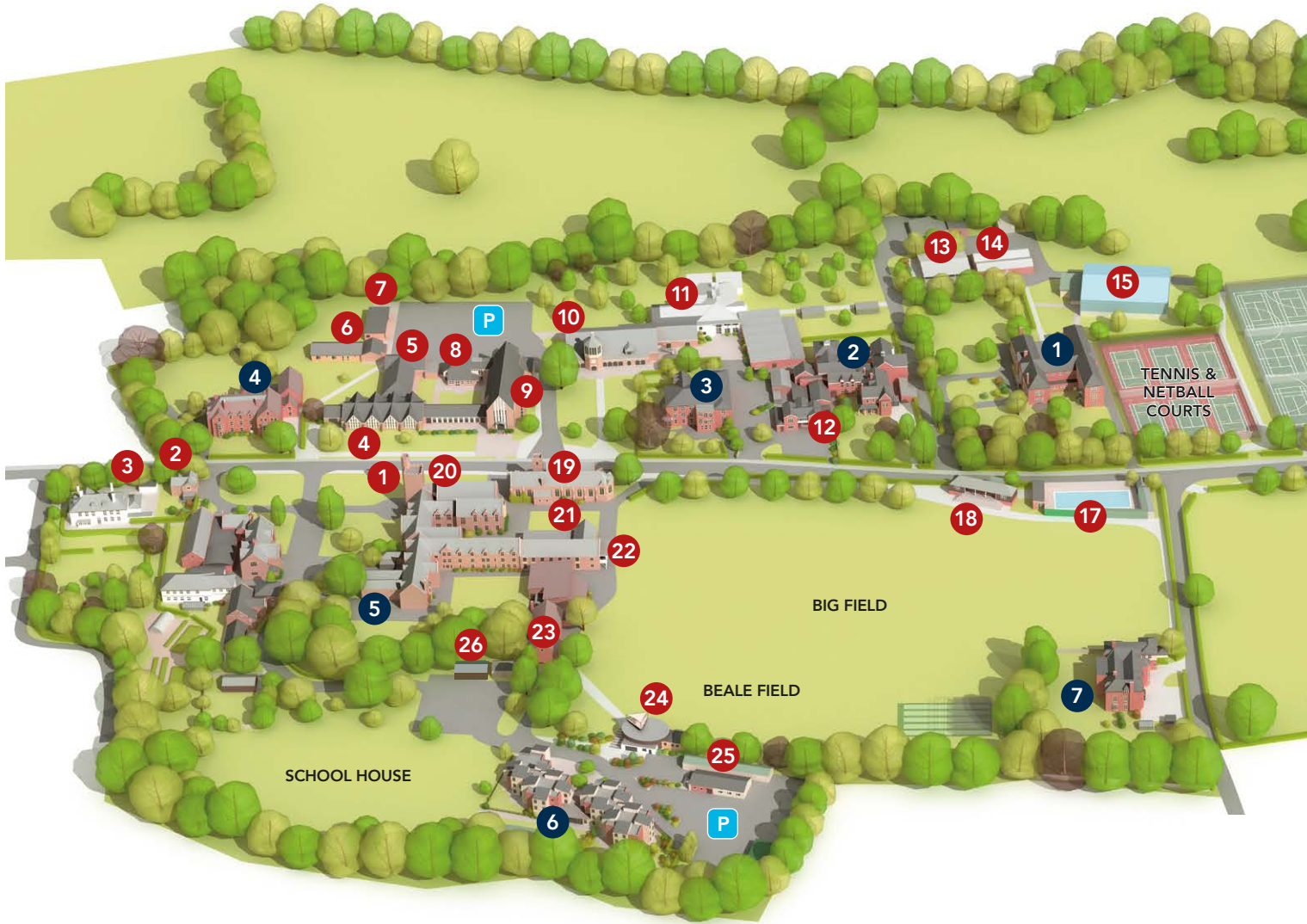
From rising 3 years old, your children will discover the joy of exploration within a superbly equipped Nursery. As they move through the school they become more independent and venture out into the beautiful grounds set amongst idyllic Devon countryside. They will enjoy time in our own woodland as well as our outdoor classroom, The Hub, helping them develop as individuals. With dedicated staff and high quality resources available to support your child they will grow and develop into young people with a thirst for learning and the confidence to face the challenges of the next stage of their education.

I would be delighted to take you on a tour so that you can experience first-hand the many qualities of this remarkable school. I look forward to meeting you soon.

If you would like to visit the School please contact the School Office on 01884 252393 and we will be delighted to arrange an appointment for you.

Andy Southgate BA Ed (Hons)
Head Master

ABOUT BLUNDELL'S



KEY

PREP SCHOOL

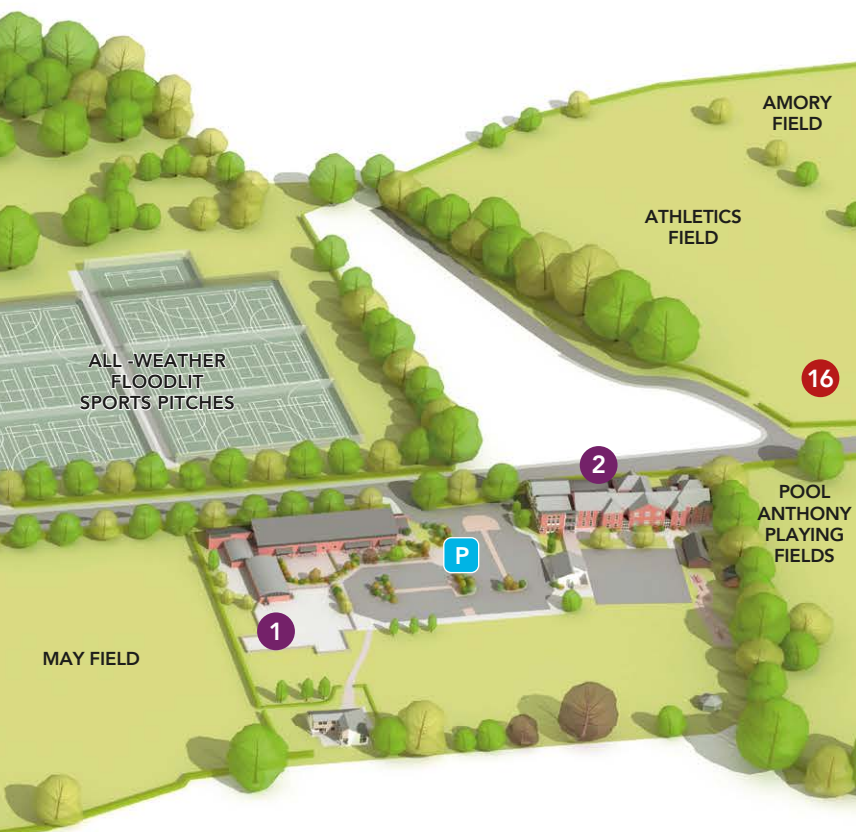
- 1 MAYFIELD
(NURSERY & PRE-PREP. Co-Ed 3-7)
- 2 MILESTONES
(PREP. Co-Ed 7-11)

FACILITIES

- 1 CLOCK TOWER & RECEPTION
- 2 PORTER'S LODGE
- 3 BLUNDELL HOUSE
- 4 DINING HALL
- 5 KITCHENS
- 6 MEDICAL CENTRE
- 7 SCHOOL SHOP
- 8 MUSIC SCHOOL
- 9 BIG SCHOOL
- 10 ONDAATJE HALL
- 11 THE POPHAM CENTRE
- 12 BURSARY
- 13 FIVES COURTS
- 14 SQUASH COURTS
- 15 SPORTS HALL & FITNESS SUITE
- 16 EAST PAVILION
- 17 SWIMMING POOL
- 18 CRICKET PAVILION
- 19 CHAPEL
- 20 LIBRARY
- 21 DEVELOPMENT OFFICE
- 22 FOBS CAFÉ
- 23 GYMNASIUM
- 24 BEALE CENTRE (OBs)
- 25 CCF & RIFLE RANGE
- 26 PORTER'S OFFICE

BOARDING HOUSES

- 1 FRANCIS HOUSE (B. 13-17)
- 2 GORTON HOUSE (G. 13-17)
- 3 NORTH CLOSE (G. 13-17)
- 4 PETERGATE (B. 13-17)
- 5 SCHOOL HOUSE (Co-Ed. 11-13)
- 6 WESTLAKE (Co-Ed. 17-18)
- 7 OLD HOUSE B. 13-17



OUR CAMPUS



OUR CAMPUS

Set in 100 acres Blundell's School has a host of facilities which are accessed by both the Prep and Senior Schools. The outside spaces include games pitches, astro pitches, tennis courts, squash courts, fives courts and a swimming pool. Our inside facilities are also many and include a theatre, dance studio, sports hall, science lab and specialist rooms for DT, Engineering and Food Technology.

ADMISSIONS

WE BELIEVE THAT WE ARE A SCHOOL WHICH EMBRACES THE TRADITIONAL VALUES OF FAMILY LIFE ALONG WITH A STRONG ACADEMIC ETHOS. LIKE ANY FAMILY, WE ENJOY WELCOMING OTHERS TO VISIT US, TO DISCOVER MORE ABOUT US AND TO HOPEFULLY JOIN OUR HAPPY AND THRIVING COMMUNITY.

VISITING THE SCHOOL

A visit to our School can take place either by making an appointment through the school office or by attending an Open Event.

Appointments usually take place during the school day, Monday to Friday in term time, although an appointment can be arranged during the holidays on occasion. During the appointment you will meet our Head Master and tour the school meeting staff and children. If your child is of Nursery or Pre-Prep age you will also meet our Head of Pre-Prep.

Our Open Events take place periodically throughout the school year and the dates are posted through our social media channels, on the school website and by contacting the school office. Parents are very welcome to book a place.

TASTER DAYS

We are delighted for children to spend a taster day or taster session with us. This will provide the opportunity for your child or children to experience a typical day with pupils in their current year group. If there is a particular lesson that you would like them to experience, the day can be arranged to coincide with this. Your child will be paired with a 'buddy' who will guide them through the day.

Feedback is given at the end of the day to discuss how the day went from the school's, the parents' and your child's perspective. Any additional questions will be answered and your child will be offered a place at this time.

COMPLETING AN ACCEPTANCE FORM

To secure your child's place an Acceptance Form is required to be completed and returned together with the Registration Fee and the Confirmation of Entry Deposit. We will then confirm your child's place. During the term before your child's entry they will be invited to spend some more time with us and information will be sent through to ease their transition into school.





ENTRY TO OUR SENIOR SCHOOL

DOES MY CHILD HAVE TO SIT AN EXAM TO GET IN TO BLUNDELL'S SENIOR SCHOOL?

Children at Blundell's Prep School do not have to sit a formal exam to gain entry to the Senior School. Children who wish to move in to Year 7 will be able to do so as long as the School is confident, through the wealth of assessment data already held by the Prep School and shared with the Senior School, that they can be suitably catered for. Parents will be kept fully informed prior to Year 6 if there is any question surrounding that. All children who do not attend Blundell's Prep are required to sit the Entrance exams which take place in the January of Year 6.

ARE THERE SCHOLARSHIP EXAMS AT 11+?

The 11+ awards are not full scholarships and instead are known as Junior Exhibition Awards. Those Blundell's Prep children wishing to be considered for a Junior Exhibition Award may choose to sit examinations in English and Maths during the first week of the Spring Term in Year 6 and these take place during the normal working week and at the Prep School. All external candidates wishing to gain entry to Year 7 are asked to sit the exams on the first Saturday of the Spring Term Saturday and these take place at the Senior School.

Preparations for those wishing to sit the exams take place during lessons, with a selection of past papers provided as part of the homework rota. Some additional materials are provided for the Christmas holidays but there are no extra classes. Our strong feeling is that the curriculum provides all that our potential Exhibitioners need to be successful in the exams and this has always proven to be the case. Parents must still register their children for entry to the Senior School during the Autumn Term of Year 6 and at that time they should indicate their interest in taking part in the Junior Exhibition process.

HOW ARE THE YEAR 6 CHILDREN INTRODUCED TO THE SENIOR SCHOOL?

This begins in the Pre-Prep with visits to Chapel and continues throughout the Prep School as children access the whole school site, take part in curriculum days either at the Senior School or with Senior School students and staff, and race around 'Ten Acre Field' during House Cross Country. At the start of the Autumn Term, a 'Welcome to Year 6' meeting is held at the Prep School for all parents of Year 6 children and there is a chance to meet Mr Wielenga, the Senior School Head. Invitations will be made for parents to visit the Senior School, if they have not done so already, and Registration Forms will be made available.

The first formal induction visit for the children takes place in the Autumn Term of Year 6, when children go for a tour of School House, meet Year 7 pupils and spend time with the Head of School House. During the Spring term all of our Year 6 children are invited to attend a Welcome Afternoon at the Senior School, during which time they will meet lots of children who will be joining Blundell's from other schools in preparation for them becoming one unified cohort in September. The day includes team building exercises and an art workshop, with a focus on the Senior School getting to know the children and vice versa. There then follows a comprehensive academic and pastoral handover between Prep and Senior School as tutors and teaching groups are allocated in readiness for Year 7 entry.

FURTHER INFORMATION

Please contact us via email prep@blundells.org or call 01884 252393 to arrange your visit or to ask any questions and we will be happy to help

FEES ACADEMIC YEAR 2023-24

Fees are charged termly in advance

	Tuition	Lunches
Years 5 - 6 Pupils (Children aged 9 – 11 years)	£4,905	£375
Year 4 Pupils (Children aged 8 – 9 years)	£4,905	£375
Year 3 Pupils (Children aged 7 – 8 years)	£4,565	£370
Year 2 Pupils (Children aged 6 – 7 years)	£3,495	£330
Year 1 Pupils (Children aged 5 – 6 years)	£3,360	£330
*Reception (Children aged 4 – 5 years)	£2,740	£330

Nursery 1 and 2 fees by session - please see opposite page

*The minimum number of sessions that your child must attend in Reception are five mornings and three afternoons increasing to full-time at the start of the term of their fifth birthday or by the start of the summer term if their birthday falls in the summer holidays. Please note full fees for lunches and tuition are charged in Reception, no reduction is made for a child who is not attending full time.

FEES

All fees are payable on or before the first day of the term for which they are due. A surcharge of 2% per month will be made on overdue accounts.

Concessions may be withdrawn for the term if payment is not received on or before the first day of term.

Please contact the School for the Admissions procedure

AFTER SCHOOL

Care is available at no additional cost

CLUBS

The fees for Clubs can be found in the Clubs booklet

INDIVIDUAL MUSIC, SPEECH AND DRAMA TUITION *Charged termly in arrears*

Individual Music (Prep)	£22.50 per lesson
Individual Music (Pre-Prep)	£18.00 per lesson
Musical Instrument Hire (Subject to availability)	£24.00 per term
Speech and Drama	£22.50 per lesson

A term's notice in writing must be given before giving up any club, music tuition or speech and drama tuition, or a term's fees paid in lieu of such notice.

INDIVIDUAL LEARNING SUPPORT *(Charged termly in arrears)*

Hourly lesson	£35 per lesson
---------------	----------------

SIBLING DISCOUNTS

Sibling discounts of 7% of the basic tuition fee will apply to the elder child of two in full-time education at the Preparatory School/Blundell's or 10% and 7% respectively for the elder two, should there be three children. Please note that if a pupil is awarded any other concession then this takes priority and any potential sibling discount ceases or does not apply. For the avoidance of doubt, sibling discount does not apply to pupils on the local fee tariff which applies in years 9 to 13 at the Senior School.

Toddler Group



We would like to welcome all parents with toddlers to join us for an opportunity to meet with other parents in a relaxed and informal atmosphere.

Thursday afternoons 2.00pm to 3.15pm, £1.00 per session.

Visit our website or call 01884 232346 for more information.

FEES NURSERY 2022-23

SESSION TIMING COST PER TERM

8.30 am - 12.00 noon not including lunch

1 morning per week	£303.05 each term
2 mornings per week	£606.05 each term
3 mornings per week	£909.05 each term
4 mornings per week	£1,212.10 each term
5 mornings per week	£1,515.10 each term

SESSION TIMING COST PER TERM

8.30 am - 1.00 pm including all food

1 morning per week	£460.95 each term
2 mornings per week	£921.75 each term
3 mornings per week	£1,382.70 each term
4 mornings per week	£1,843.55 each term
5 mornings per week	£2,304.50 each term

SESSION TIMING COST PER TERM

8.30 am - 3.30 pm including all food

1 day per week	£677.35 each term
2 days per week	£1,354.70 each term
3 days per week	£2,032.00 each term
4 days per week	£2,709.35 each term
5 days per week	£3,386.70 each term

EXTRA SESSIONS & EXTRA LUNCHES Cost per day

Extra Session 1.00 pm - 3.30 pm*	£19.70 per day
*Extra Afternoon Session only available when added to a Morning Session with lunch (added to your invoice at the end of each term in arrears)	
Extra Lunch	£6.25 per day
(added to your invoice at the end of each term in arrears)	

PRE-SCHOOL & AFTER SCHOOL CARE Cost per day

8.00 am - 8.30 am Early Morning drop off	Free of charge
4.05 pm - 6.00 pm Late pick up	Free of charge

All fees are payable on or before the first day of the term for which they are due. A surcharge of 2% per month will be made on overdue accounts.

NURSERY FUNDED HOURS - ADDITIONAL CHARGES

SESSION TIMING Cost per term

8.30 am - 1.00 pm including all food

(8.30 am - 11.30 am funded hours no charge)

1 morning per week	£201.20 each term
2 mornings per week	£402.30 each term
3 mornings per week	£603.50 each term
4 mornings per week	£804.65 each term
5 mornings per week	£1,005.80 each term

SESSION TIMING Cost per term

8.30 am - 3.30 pm including all food

(8.30 am - 11.30 pm funded hours no charge)

1 day per week	£417.65 each term
2 days per week	£835.20 each term
3 days per week	£1,252.80 each term
4 days per week	£1,670.45 each term
5 days per week	£2,088.05 each term

PRE-SCHOOL & AFTER SCHOOL CARE Cost per day

8.00 am - 8.30 am Early Morning drop off	£4.65 per day
(added to your invoice at the end of each term in arrears)	
4.05 pm - 6.00 pm Late pick up	£8.15 per day
(added to your invoice at the end of each term in arrears)	

EXTRA AFTERNOON SESSION Cost per day

1.00 pm - 3.30 pm Extra Session*	£19.70 per day
*Extra Afternoon Session only available when added to a Morning Session with lunch (added to your invoice at the end of each term in arrears)	

Funded hours are available from the term after your child turns three until the end of Nursery 2.

All fees are payable on or before the first day of the term for which they are due. A surcharge of 2% per month will be made on overdue accounts.

SCHOOL AIMS AND VALUES

THE SCHOOL'S DEVELOPMENT PLAN EXISTS TO SUPPORT THE BROAD, BALANCED AND EXCELLENT EDUCATION THAT WE AS A SCHOOL UNDERTAKE TO PROVIDE.



ETHOS

The School's motto: Non-Sibi – not for oneself, exemplifies the genuine feeling of togetherness and strong family values which permeate every area of School life. The children at Blundell's Preparatory School will enjoy extensive opportunities. It is our belief that children deserve to develop and grow in a happy, friendly and supportive environment and that they learn best when they feel safe, engaged, captivated and fully involved in the learning process. Our aims form the basis of the Development Plan and are shared with all stakeholders through the Staff and Parent Handbooks.

OUR AMBITION

To be the first-choice co-educational day school in the South West of England.

OUR VISION

To be the school that is more thoughtful and innovative in understanding its pupils and growing their potential than any other school in Britain.

OUR AIMS AND VALUES – 'ROOTS AND WINGS'

There are two things parents should give their children: Roots and Wings. Roots to give them their bearing and a sense of belonging. Wings to free them from constraints and prejudices and by which to aspire to live lives of meaning and consequence.

These aims are realised through the pursuit of 5 key pillars:

DYNAMIC LEARNERS – 'Anything is possible'

We help pupils to take ownership of their learning, balancing expert teacher support and collaboration with others, with resourcefulness and resilience. In this we develop both interdependence and independence in our pupils, characteristics that will enable them to thrive in the classroom, on the stage, on the sports pitches and in their lives beyond school.

SELF-KNOWLEDGE – 'Understanding who I am'

I believe that my character is derived from being true to myself and my values. Our ethos is based on an acceptance of ourselves and others, and the celebration of diversity and difference within our community. We are authentic, with the emotional intelligence and confidence to embrace the world beyond Blundell's.

SOCIAL RESPONSIBILITY – 'Embracing responsibilities'

We find purpose and meaning in engaging with the world around us, in line with our Christian values, collaborating with our community, near and far, in a profoundly positive way. With passion and optimism, we can change the world for the better.

DISCOVERY – 'The joy of adventure'

We are brave and courageous in embracing challenge and adventure. Our collective and individual curiosity fuels innovation and an openness to new ideas. From Nursery to Sixth Form, in lessons and at play, we take measured/ appropriate risks in pursuit of what is possible.

STRONG FOUNDATIONS – 'Established and enterprising'

Underpinning our ambition is a commitment to strong governance and a secure financial future for our school. The development of our facilities and our people ensure excellence in all that we do, and enables us to achieve our vision. A global outlook, rooted in the South-west of England.

PASTORAL

AT BLUNDELL'S PREP PASTORAL CARE IS AT THE HEART OF EVERYTHING AND THE CENTRAL COMPONENT OF ALL THAT WE DO. OUR OUTSTANDING PROVISION PROVIDES THE FOUNDATIONS TO ALLOW OUR PUPILS TO NOT ONLY STRIVE TO BE THE BEST THEY CAN BE IN ANY GIVEN ACADEMIC, ARTISTIC OR SPORTING DISCIPLINE BUT TO ALSO FEEL HAPPY, SAFE, SUPPORTED AND CARED FOR THROUGHOUT THEIR TIME WITH US.

We want our pupils to be happy and successful - in that order. We take pride in our pupils treating each other with respect and looking after one another and the school's motto 'Non Sibi' encourages values of courtesy, kindness and selflessness which combine to create a very special atmosphere.

Each pupil is allocated to a form where their form teacher is the first point of contact pastorally for both the pupil and their parents. Throughout their education other teachers take further interest and responsibility for the children's care and wellbeing. The support and guidance that we give our pupils is helped along the way by pastoral intervention programs which are tailored to individual needs of the pupils, working with them and their teachers and parents to help provide the best support we possibly can give. Programs such as Girls on Board (a nationally recognised program to pastorally support girls) offers specific support and guidance. Should it be needed pupils can access our dedicated school counsellor and the collection of pastoral data from the children about how they are feeling and coping in school and at home, adhering to our policies, collating important data through such pastoral platforms as Cpoms allows us to analyse, understand and then implement sound decisions and all these elements combine to help in the excellent delivery of our outstanding pastoral program.

In conjunction with our academic lessons, we run a program of Personal, Social and Health Education that helps to support the children's growth and covers important areas of a child's emotional development such as mental health, personal safety (both in the real world and on the internet), eating healthily as well as making good life choices and helping others. Many of the things we implement in our PSHE program are also covered in our whole school assemblies, which are pastorally driven with important messages for our whole school community to learn from.

Our rewards and sanctions programs teach our children the importance of hard work, perseverance and resilience as well as fairness, compassion and as our School motto says 'not for ones self'. Being a prefect in Year 6, which all our pupils get a chance to be, provides our pupils with the opportunity to not just demonstrate leadership, to make their own decisions and judge for themselves the best course of action to take in different situations.

Our dedicated team of teachers are passionate about providing the best for every child and we pride ourselves on the strength of relationships that exist between pupils, teachers and parents. We welcome open communications and a strong partnership with our families, all of whom are invited to attend a wide variety of events including informal tea parties, concerts, dramatic productions, sports matches and exhibitions.

Through small form groups led by experienced teachers, we offer time for children to be children, with the knowledge that they have someone to turn to whenever they need help or guidance. A strong focus on positive relationships and a commitment to developing reflective mindsets ensures that children feel able to share any concerns with the people around them. The children at Blundell's Prep are happy children and that shines through in everything that they do.

SCHOOL COMMUNITY

AT BLUNDELL'S PREP WE TRULY DO HAVE A WONDERFUL COMMUNITY WHICH WELCOMES NEW FAMILIES WHOLEHEARTEDLY. EACH YEAR GROUP HAS A PARENT LIAISON REP WHOSE ROLE IS CRUCIAL IN DEVELOPING A STRONG SENSE OF BELONGING. THE MAIN ROLE OF THE PARENT LIAISON REPRESENTATIVES IS TO ORGANISE SOCIAL GATHERINGS IN ORDER TO BRING THE PARENTS OF THEIR YEAR GROUP TOGETHER.

Parent Liaison Representatives are the first point of parental contact for new parents. They are extended members of the 'Friends of Blundell's Prep' (FOBP) – providing a critical network in supporting and promoting forthcoming events to other class / year group parents and seeking additional one-off offers of assistance for events and activities.

We are very fortunate to have a wonderfully supportive FOBP

Committee. All parents of children at Blundell's Prep, from Nursery to Year 6, are warmly invited to join the FOBP; whether able to support the many enjoyable events organised throughout the year or taking on the role of Chair, all contributions are greatly appreciated. The committee's remit is to organise exciting activities for parents and pupils to enjoy, and in doing so, to raise additional funds with which to contribute towards equipment or projects for the direct benefit of the

children. There are regular meetings in school after morning drop off, but it is understood that not all members of the committee will be able to attend every meeting. There is the opportunity to contribute as a member of the sub-committee, which may involve helping out at a number of events throughout the year or in any way that you can.



“ The whole Blundell's community was warm and welcoming when we joined. ”

NEW PARENT





NURSERY DEPARTMENT

THE YOUNGEST CHILDREN IN OUR SCHOOL TAKE THEIR FIRST STEPS IN EDUCATION IN OUR EXCITING AND VIBRANT NURSERY. THEY ENJOY ALL ASPECTS OF SCHOOL LIFE IN A HAPPY, CARING AND STIMULATING ENVIRONMENT AND THEY ARE GIVEN EVERY OPPORTUNITY TO GROW, DEVELOP AND FLOURISH.

Every child here at Blundell's Nursery is unique, with their own interests, experiences and personal qualities. We work closely with parents to ensure the happiness and well-being of every child in our care. Children are able to grow in confidence and maturity within the secure family atmosphere of Blundell's Prep school.

Our bright, spacious Nursery provides the most welcoming and engaging environment to make your child's first experience at school happy and stimulating. Our dedicated staff are committed to providing a caring environment where high quality play and education are used to encourage

your child's intellectual, physical, social and emotional development. Children learn best when they are having fun. Our children are given every opportunity to learn through a combination of structured play and inspirational teacher led activities. Children in our Nursery have access to our secure outdoor play areas as well as our superb school grounds - perfect for woodland walks and observing changes in the weather and seasons. Being part of the whole school allows our children to benefit from the extensive facilities and resources at our fingertips. We feel strongly that the early years in a child's education are the most important to enable a child to develop a deep, lifelong love of learning.

We therefore deliver an exciting, innovative, well-planned, rewarding Early Years Curriculum, which meets the needs of each and every child at their own pace. Most importantly, we strive for children to play and learn in a family environment, where all experiences are enjoyable, engaging and exciting.

We have extensive care for children from 8am-6pm and even some extra clubs for our Nursery children to choose from.



PRE-PREP DEPARTMENT (RECEPTION TO YEAR 2)

OUR VIBRANT PRE-PREP OFFERS AN EXCEPTIONAL EDUCATION IN A SAFE, SECURE, COLOURFUL AND NURTURING ENVIRONMENT.

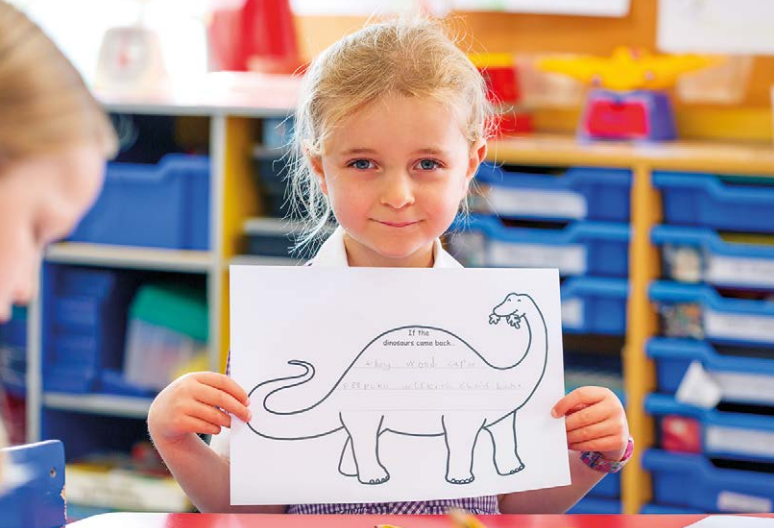
The joy of learning and the excitement of childhood exploration are celebrated in a warm, caring, family atmosphere with a great emphasis placed on every child wanting to come to school each day. We view your child's education as a partnership and our experienced teachers and teaching assistants are always on hand for the children and parents.

We want every child to feel that they belong here and the school's motto 'Non Sibi' encourages values of courtesy, kindness and selflessness which combine to create a very special atmosphere. Our dedicated team of teachers are passionate about providing the best for every child and

we pride ourselves on the strength of relationships that exist between pupils, teachers and parents. We welcome open communications and a strong partnership with our families, all of whom are invited to attend a wide variety of events including informal tea concerts, dramatic productions, sports events, assemblies and learning showcases. Through small form groups led by experienced teachers, we offer time for children to be children, with the knowledge that they have someone to turn to whenever they need help or guidance. A strong focus on positive relationships and a commitment to developing reflective mindsets ensures that children feel able to share any concerns with the people around them.

The children at Blundell's Pre-Prep are happy children and that shines through in everything that they do.

Our Pre-Prep allows every child the freedom, space and countless opportunities to grow in confidence and discover their talents as they take their all-important first steps into school life. I would be delighted to welcome you to visit and tour so you can really see why our Pre-Prep is so special.



“

The care of the teachers is superb – we wish to highlight the good work that they do day in and day out.

Thank you all!

”

PARENT

HOMework

RECEPTION

Your child will have the opportunity to choose a library book to take home each day. They are encouraged to change them when they arrive in the morning. This book may be kept for as long as you wish. The children are not expected to read the library book themselves although as their reading progresses they will pick out familiar words. The library books enable the children to share books with you and to develop a love of reading. Help with the learning of words and letters is always extremely beneficial for a short time each day but do not feel under any pressure – your child may be very tired at the end of the school day, especially during the first term.

YEAR ONE

Children will be encouraged to choose a class library book to take home. In the early part of the year, these will be books for them to enjoy having read to them. As they become more fluent, confident readers, they may choose to read them to you. In order to ensure that reading remains a pleasurable experience, we would stress that there is no obligation to read a whole book every day or for large numbers of pages to be read. Each child is given a colour coded class reading book, which they will read to either the class teacher or assistant. These books need returning to school each day and each week there is a small list of spellings to learn.

YEAR TWO

A reading book and reading record book is provided each night. Each week a spelling list will be sent home. These words need to be practised as often as possible each week and the children need to be able to write the words from dictation.

On Friday each week, a Maths Homework Sheet will be sent home. This contains activities for you to work on in co-operation with your child. There will be a new activity each week. Most of these are practical activities and are used to introduce the focus of the Maths lessons for the following week. On Friday there will also be a list of mathematical facts which will be tested each week.

THE SCHOOL DAY IN THE PRE-PREP

8.00 am	-	8.40 am	Early Morning drop off
8.40 am	-	8.45 am	Registration
8.45 am	-	9.05 am	Assembly
9.00 am	-	10.30 am	Lesson 1
10.30 am	-	10.50 am	Morning Break
10.50 am	-	12.00 noon	Lesson 2
12.00 noon	-	1.15 pm	Lunch Break
1.20 pm	-	2.30 pm	Lesson 3
2.30 pm	-	2.45 pm	Afternoon Break
2.45 pm	-	3.40 pm	Lesson 4
3.40 pm			Home Time
3.45 pm	-	4.30 pm	After School Clubs
4.30 pm	-	6.00 pm	After School Care



PREP DEPARTMENT (YEAR 3 TO YEAR 6)

THE VALUE OF STRONG PASTORAL CONNECTIONS IS AT THE HEART OF OUR PREP SCHOOL AND EVERY CHILD KNOWS THAT THEY HAVE A FORM TEACHER WHO IS ALWAYS ON HAND TO PROVIDE GUIDANCE AND SUPPORT.

The Form Teacher's role is a crucial one as the form teacher will be there to help each child to start their day in the right way. They will see one another throughout each day and then come back together as a class before either heading home or to a club. In Year 5 the children are often split into 3 forms and this continues in to Year 6 when the children experience their final year at the Prep School and all of the privileges and responsibilities that go with being the most senior pupils. Every one of our senior pupils has the chance to become a Prefect for half a term and to get a sense as to what such a position entails,

taking on duties but also enjoying the much-loved privileges.

Our small classes and subject specialist teachers provide an environment in which every child is given the support that they need to flourish and to become the best learner that they can be. Within all subject areas are opportunities for children to develop core skills which will not only promote their academic development but will also prepare them for a lifetime of learning. At the heart of that is the determination to help each individual to better understand how they can realise their full potential.

The curriculum for all includes English, Mathematics, Science, History, Geography, Religious and Philosophical Studies, French, Art, Design Technology, Food Technology, Computing, Drama, Music, PE and Games. As well as the core curriculum we also believe in the value of a rich co-curricular programme and each term there are a wide range of theme days, trips and visits to engage the children and extend their learning. Recent experiences have included weeks dedicated to the Creative Arts and STEM programmes, but the highlight for most of our children will always be the residential trips during the Summer Term.



THE SCHOOL DAY IN THE PREP

8.00 am	-	8.30 am	Drop Off
8.30 am	-	8.35 am	Registration
8.35 am	-	9.00 am	Assembly
9.00 am	-	9.50 am	Lesson 1
9.50 am	-	10.40 am	Lesson 2
10.40 am	-	11.05 am	Morning Break with refreshments
11.05 am	-	11.55 pm	Lesson 3
11.55 am	-	12.45 pm	Lesson 4
12.45 pm	-	1.40 pm	Lunch Break
1.40 pm	-	1.45 pm	Registration
1.45 pm	-	2.15 pm	Lesson 5
2.15 pm	-	3.15 pm	Lesson 6
3.15 pm	-	3.25 pm	Afternoon Break
3.25 pm	-	4.25 pm	Lesson 7
4.25 pm	-	4.30 pm	Form Time
4.30 pm			Form Teachers bring their class to the School gate for collection. Children go home or stay for After School Clubs or Prep
4.30 pm	-	4.50 pm	Break with refreshments
4.50 pm	-	5.30 pm	After School Clubs or Prep
5.30 pm	-	6.00 pm	Extended Provision

Each day is full and provides variety and breadth with academic study, practical work, and physical activities.

HOMEWORK

TERM TIME EXPECTATIONS:

- Y3** • Reading - daily as appropriate
- Spellings - set on a Friday for the following Friday
 - Times-Tables - set on a Friday for the following Friday
- Y4** • Reading - daily as appropriate
- Learning Spellings - set on a Friday for the following Friday
 - Learning Times-Tables - set on a Friday for the following Friday
 - One 30 minute written Prep each week in English and Maths to be completed during the week
- Y5** • Reading - daily as appropriate
- Learning Spellings - set on a Friday for the following Friday
 - Learning Times-Tables - set on a Friday for the following Friday
 - One 30 minute written Prep each week in English, Maths and Science to be completed during the week.
- Y6** • Reading: daily as appropriate
- Learning Spellings - set on a Friday for the following Friday
 - Learning Times-Tables - set on a Friday for the following Friday
 - One 30 minute written Prep each week in English, Maths and Science to be completed during the week.

HOLIDAY EXPECTATIONS:

HOLIDAY BOOK CHALLENGE: All pupils from REC to Year 6 will be encouraged to read and complete Book Challenge Reviews during the Summer, Christmas and Easter holidays.

OTHER COMPETITIONS AND PROJECTS: Staff may from time to time wish to provide opportunities for pupils to participate in competitions or undertake additional project work during the Summer, Christmas and Easter holidays. This will be recorded in Prep Diaries prior to the end of each term where appropriate.

LEARNING SUCCESS: Bespoke Learning Success Prep may be given to individuals where this is felt to be beneficial; this will be communicated to parents and pupils by the LS department.

CURRICULUM AIMS AND SUBJECTS

THE CURRICULUM AT BLUNDELL'S PREPARATORY SCHOOL SEEKS TO ALLOW ALL PUPILS THE OPPORTUNITY TO LEARN AND MAKE PROGRESS, FULFILLING THEIR POTENTIAL ACROSS A WIDE RANGE OF SUBJECTS IN A SUPPORTIVE AND STIMULATING ENVIRONMENT. WE RECOGNISE OUR RESPONSIBILITY TO PREPARE OUR PUPILS FOR LIFE IN MODERN BRITAIN.

CURRICULUM

The National Curriculum is broadly followed with the core subjects of English, Mathematics and Science being given clear priority. Children in Years 4–6 are set in the core subjects of English and Mathematics. In this way the school is flexible in its assessment and movement of children across teaching groups (Parents are informed if a change takes place) and socially the year group mixes. It also means that children are potentially placed in different groups for English and Mathematics. The school feels that this helps with the pace of learning and individual confidence. The foundation subjects including Religious and Philosophical Studies, Geography and History are taught throughout the school. Pupils are also taught Art, Music and Drama. In the Prep School the pupils are taught Design Technology (Y3+4), Design Technology (Y5+6) Food Technology and Information & Communication Technology. Also Personal, Social, Health and Economic Education is built into the timetable as

well as a leadership course for those pupils in Year 6, designed to encourage independent and investigative learning and improve organisational skills. French is taught from Nursery.

The Curriculum is enhanced by many educational trips around the local community and beyond. Children in the Foundation Stage (N1, N2, REC) are taught through the Foundation Stage Curriculum. This consists of six areas of learning.

- Personal, social and emotional development
- Communication, language and literacy
- Problem solving, reasoning and numeracy
- Knowledge and understanding of the world
- Physical development
- Creative development

SUBJECTS

Art

Computing

Design Technology/Engineering

Drama

English

French

Food Technology

Games

Geography

History

Maths

Music

Physical Education

PSHE (Personal, social, Health & Emotional)

Religious and Philosophical Studies

Science





CURRICULUM AIMS

The Nursery and Reception classes follow the guidance set out in the 'Early Years Foundation Stage' curriculum which came into effect in September 2012. However, we are not limited to this alone, and succeed in providing many rich opportunities for the children to develop in all areas of their learning above and beyond the requirements of the Foundation Stage Curriculum. As an independent school, children in Key Stage 1 & 2 are not bound to follow QCA DFEE National Curriculum Guidelines. However, our curriculum encompasses those aspects of the National Curriculum which we consider to be most valuable to our children's education, as well as offering many further opportunities for extending and broadening the learning experience. We provide a curriculum which encourages all children to develop skills and increase knowledge across a wide range of subjects, and believe that children should be given the opportunity to investigate, question and challenge within an education which enables all to achieve full potential as individuals.

Differentiation is clearly key, and the objective of the class teacher must be to deliver the curriculum at a level appropriate for enhancing the learning of each pupil in the class. Individual children may work at a quicker or slower pace through aspects of the curriculum, and their level of knowledge and understanding in any subject area will be limited only by their own abilities. Additional classroom support continues to be made available to enable the class teacher to focus help where it may be needed most and parents may also be offered the option of one-to-one support in Maths or English where this may be felt to be beneficial by the Learning Success Department. The Curriculum Guide, which is available on the website, provides an outline of the different areas of the curriculum that your child will follow at Blundell's Preparatory School. It gives an overview of topic areas and is a flexible guide, as teaching staff need to vary their delivery of the curriculum according to the particular needs and interests of the children, and may revise and develop their programmes

of study throughout the year. Teachers of English and Maths in particular may wish to adapt their teaching to address the different needs of their sets. Some topic areas will be repeated as a child moves through the school; this will be because the topic is being delivered in greater depth and detail, is being studied from a different aspect or is being reinforced as part of another topic.

We hope that children will be supported and encouraged in their studies by parents and, should you wish to know more about the topic areas this information is available in the Curriculum Guides which are available on the website or please contact the School.



SPORT

AT BLUNDELL'S PREP, WE AIM TO DELIVER A HIGH-QUALITY PHYSICAL EDUCATION AND GAMES CURRICULUM WHICH INSPIRES ALL PUPILS TO ENJOY AND PARTICIPATE IN COMPETITIVE SPORT AND OTHER PHYSICALLY-DEMANDING ACTIVITIES.

In the Early Years, children are taught to be active and to develop their coordination, control, and movement. We provide opportunities for pupils to become physically confident in a way which supports a healthy and active lifestyle. Within their P.E. lessons, the children are given the opportunity to work as individuals, in a group or as part of a team. Pupils develop core movement, become increasingly competent and confident, and access a broad range of opportunities to extend their agility, balance and co-ordination. As the children progress, we aim to give them opportunities to compete in sport and other activities in order to build character and help to embed values such as fairness and respect.

AIMS OF THE SPORTS DEPT

- To develop a positive attitude to physical activity
- To enhance physical development and individual fitness
- To be enjoyable, challenging and purposeful
- To learn to play fairly, compete honestly, win modestly and lose gracefully
- To allow pupils to extend themselves to a high level through county and national experiences

SPORTS

Rugby

Hockey

Cricket

Netball

Handball*

Tennis*

Badminton*

Squash*

Basketball*

Lacrosse*

Swimming (school pool)

Athletics*

Dance*

Cross Country*

We have a full fixtures programme for Rugby, Hockey, Cricket and Netball

*Played as part of our PE programme

MUSIC

AT BLUNDELL'S PREP WE AIM TO INSTIL A LOVE OF MUSIC IN ALL PUPILS. THE CHILDREN HAVE ONE HOUR OF CLASS MUSIC EACH WEEK AND ARE INVITED TO JOIN A RANGE OF INSTRUMENTAL AND SINGING ACTIVITIES INCLUDING OUR POPULAR CHOIRS.

Music at Blundell's Prep is an integral part of school life. A specialist teaches this subject from Nursery to Year 6 within the curriculum. Ten peripatetic teachers visit to teach a wide variety of instruments. These include piano, violin, cello, flute, clarinet, saxophone, trumpet, trombone, guitar, drums and singing. All the children sing each week and are encouraged to join our thriving choir in Year 3 and above. We also have a girls' choral choir, a boys' choral choir, a string group and a wind band which meet each week.

The children are given many opportunities during the year to perform in concerts within school and the community either as a soloist or in groups.

AIMS OF THE MUSIC DEPT

- For all children to enjoy their music-making, and that all should be encouraged to participate vocally and instrumentally.
- To give children the skills to continue their enjoyment of music in later life.
- To assist each child to develop a positive self-image and self-confidence, and to develop a sensitive response to sound and music.
- To offer children the opportunity to perform to a variety of audiences.

INSTRUMENTS TAUGHT

PERCUSSION

Drums, Piano

WOODWIND

Clarinet, Saxophone, Oboe, Bassoon, Flute

BRASS

Trumpet, French Horn, Trombone

STRINGS

Violin, Cello

VOICE

Singing, Speech and Drama

MUSIC CLUBS

Brass Ensemble

Choir

Choral Choir

Orchestra

Percussion

String Group

Theory and Wind Group





DRAMA

AT BLUNDELL'S PREP DRAMA IS SO MUCH MORE THAN PERFORMING IN A PLAY. IT ALLOWS CHILDREN THE CHANCE TO EXPLORE, DEVELOP AND EXERCISE THEIR IMAGINATION. DRAMA GIVES CHILDREN THE OPPORTUNITY TO BUILD SELF-CONFIDENCE AND TO LEARN SELF-DISCIPLINE.

The curriculum encourages each child to explore and develop their own imagination through a carefully planned skills programme which allows for improvisation and innovation from every child. The learning experience is fun and exciting as the children are expected to explore imaginary destinations as well as relive real experiences through familiar stories, mime and adventures.

A plethora of opportunities are available to perform in a multitude of ways; acting, singing, speaking and listening, and through Play-in-a-Day events and Christmas plays.

AIMS OF THE DRAMA DEPT

- To use the imagination through improvisation and acknowledges other people's imagination through poetry, prose, scripted drama, art etc.
- To encourage speaking and listening as a two-way co-operative process and life skill.
- To learn self-discipline and an understanding of others are implicit in its activity.
- To provide a chance to stimulate and exercise the imagination.
- To help to make sense of life-experiences as a valuable preparation for the future.

RECENT PRODUCTIONS

Matilda	2023
Chitty Chitty Bang Bang	2022
Oliver	2021
Guys and Dolls	2020
The Jungle Book	2019
Mary Poppins	2018
Doctor Dolittle	2017
The Wizard of Oz	2016
Around the world in 80 days	2015

TECHNOLOGIES

BLUNDELL'S PREP HAS AN INNOVATIVE INTEGRATED PROGRAMME OF TECHNOLOGIES. CHILDREN IN THE PREP DEPARTMENT HAVE THE OPPORTUNITY TO TAKE PART IN WEEKLY LESSONS IN INFORMATION TECHNOLOGY, FOOD TECHNOLOGY, DESIGN TECHNOLOGY AND ENGINEERING.

DESIGN TECHNOLOGY & ENGINEERING



Blundell's Prep School has a light, modern, well-resourced DT room, which offers an excellent environment in which the children can be both confident and innovative. The children are offered opportunities to think creatively about our rapidly changing technologies. Working as individuals and as part of a team, they identify needs, wants and opportunities and respond to them by developing ideas and making products. Through design and technology, the children can become discerning, innovative and informed users of products.

AIMS OF THE DT DEPARTMENT

- To develop children's designing and making skills.
- To develop their knowledge and understanding.
- To develop the children's capability to create high quality products through combining their designing and making skills with knowledge and understanding.
- To nurture creativity and innovation through designing and making.
- To explore values and attitudes to the made world and how we live and work within it.

FOOD TECHNOLOGY



Aspects of each area within the syllabus are taught to each of the year groups so that as skills and understanding improve, more advanced aspects of each element are introduced. We adopt a flexible approach to teaching within the syllabus. This allows us to link with outside influences, events and trends and to take advantage of educational opportunities as they arise. This flexible approach ensures that lessons are contemporary and topical.

AIMS OF THE FT DEPARTMENT

- To establish a healthy interest in all aspects of food from an early age
- To teach pupils to enjoy food and to be able to make informed choices
- To equip children with useful life skills
- To develop personal, social and health education through the teaching of nutrition, principles of healthy eating, food safety and hygiene
- To make pupils aware of all aspects of food production 'from farm to fork'

INFORMATION TECHNOLOGY



The use of ICT in society expands at an ever-increasing pace and it is an essential part of everyday life for the staff and pupils alike at Blundell's Prep. We offer a curriculum that matches the needs of society today and pupils will have access to a wide range of facilities including desktop PCs, laptops and iPads.

AIMS OF THE IT DEPARTMENT

- To stimulate the use of Information Technology in all subjects taught at Blundell's Prep.
- To enable and encourage every pupil to develop relevant IT skills and an understanding of the impact of ICT on society.
- Developing understanding and confidence in using information & communications technology through appropriately differentiated practical tasks, enquiry and experiment.
- Ensuring that all children have access to, and experience of, appropriate hardware and software to enable them to achieve the highest level of competence and understanding.



OUTDOOR LEARNING



OUTDOOR LEARNING IS EMBEDDED WITHIN THE CURRICULUM. WE BELIEVE THAT USING NATURE AND THE OUTDOORS CAN HELP TO NURTURE CHILDREN'S HOLISTIC DEVELOPMENT, HELP TO BUILD THEIR SELF-ESTEEM AND RESILIENCE, AND ENABLE THEM TO BECOME BETTER AT MANAGING THEIR OWN RISK.

Learning outside of the classroom enables children to further develop their curiosity, confidence, creativity, communication and understanding of the natural environment.

The children access 'The Hub' (our own outdoor classroom), 'The Hollow' (outdoor team building area) and our own woodland. The children experience to a wide range of activities designed to enrich and develop their learning from within the classroom; helping them to gain and improve new skills.

WILD WONDERS AND WILD EXPLORERS

Wild Wonders and Wild Explorers are firm favourites with the children at Blundell's Pre-Prep and Prep. Delivered through weekly sessions for children from Nursery One to Year Four, our bespoke outdoor learning curriculum has been designed by our own Forest School trained teachers to excite, inspire, and meet the needs of our youngest learners.

Armed with their own outdoor learning passports, the children head outdoors throughout the year to explore, develop new skills and enjoy activities within our school woodland, wildlife and nature area, purpose built outdoor classroom and sizeable mud kitchen. With a strong emphasis on helping the children to develop a growth mindset, children can expect to enjoy a range of activities from building working bridges, growing their own vegetables, whittling toy mice and, of course, toasting marshmallows!



AFTER SCHOOL PROVISION

OUR AFTER SCHOOL PROVISION IS EXTENSIVE AND ENABLES OUR PARENTS TO LEAVE THEIR CHILDREN WITH US UP UNTIL 6.00 PM EACH TERM TIME WEEK DAY IF REQUIRED. CHILDREN WILL CONTINUE TO BE NURTURED AND CARED FOR BY OUR OWN PROFESSIONAL STAFF AND SPECIALISTS.

AFTER SCHOOL PROVISION

Pre-Prep and Nursery	3.30 pm – 4.30 pm	Clubs
	4.30 pm – 5.30 pm	After School Care
	5.30 pm – 6.00 pm	Extended Care
Prep	4.30 pm – 5.30 pm	Clubs
	5.30 pm – 6.00 pm	Extended Provision

All children staying after 4.30 pm are provided with a light tea.

CLUBS

Our range of clubs is extensive providing children with a variety of skills and fun at the end of a long and fulfilling day. Although not all clubs are open to every year group, children have a fantastic choice each day.

AFTER SCHOOL CARE

From 4.30 pm children in our Pre-Prep can stay until either 5.30 pm or 6.00 pm. They are provided with a light tea and then can relax and play after their busy day until it is time to go home.

EXTENDED PROVISION

After Clubs children in the Prep School whose parents are unable to collect at 5.30 pm can stay in school until 6.00 pm.

SOME OF OUR CLUBS

FUNKY JAZZ
 GYMNASTICS
 SEAM FIVES
 SCRUM KIDS
 MAKE AND BAKE
 LET'S BUILD
 ART
 SEWING
 MUSIC
 COMPUTING
 FENCING
 SCHOOL COUNCIL
 QUIZ
 BALLET

ENRICHMENT/GAT

OUR CREATIVE AND EXPERIENCED STAFF ARE SKILLED AT EXTENDING ALL PUPILS WITHIN THE CLASSROOM. OUR SMALL CLASSES ENSURE STAFF HAVE TIME TO SPEND WITH EACH INDIVIDUAL PUPIL, UNDERSTANDING AND RESPONDING TO THEIR PARTICULAR NEEDS.

We know that our pupils have different strengths and we take great care in finding ways to build on these strengths. We want every child with a passion for a subject to develop their interest with enthusiasm and an individualised love of learning, driven from within.

We are committed to providing an environment which challenges and encourages all pupils to maximise their potential, including pupils who we identify as being more able. A more able pupil is one whose ability in any subject is significantly and consistently above the expectation for their age.

More able pupils are provided with extension and enrichment opportunities within lessons, school activities and through participation in competitions and events with which our school is involved. These opportunities are not necessarily exclusively offered to those pupils on our Gifted & Talented list (GAT) as we recognise the part that interest and enthusiasm can play in achievement; a child who is intrinsically interested in History or who has a passion for Science may well enjoy these challenging activities too. We also have an Enrichment Programme which runs throughout the school and is open to all who are

intellectually curious. The sessions include plenty of opportunities for questions to be asked and discussions to be had and include topics such as art, language, science, philosophy. We are ambitious for all our children. We encourage everyone to aim high and be the very best they can be.

SEN

BLUNDELL'S IS COMMITTED TO SECURING THE BEST EDUCATIONAL OUTCOME FOR EVERY CHILD, REGARDLESS OF ANY BARRIERS TO LEARNING.

As a community, we work together to provide a broad and balanced curriculum that is continually reviewed to make learning accessible to all of our pupils. Our aim is to support pupils with SEN to raise their aspirations and their achievement.

Where it has been identified that extra support is necessary for the child to access the mainstream curriculum, there will be an assessment of the child's needs. Parents may elect to have their child assessed by an educational psychologist if further investigation into difficulties and needs is required.

Results of all assessments will be shared with the parents and relevant teaching staff to discuss the ways forward. After discussion with all parties, additional school support, either on a short- or long-term basis, may be recommended and targets in the form of an Individual Education Plan (IEP) for the child will be created. Pupils are involved in reviewing their IEP and planning their targets for the coming term. We build strong relationships with the pupils and encourage them to voice their opinion about their progress as often as possible.

Where appropriate, additional support will be provided as a package. This support may be one to one out of class, in a small group, or within the classroom setting. The level of support will be regularly reviewed and modified to suit the needs of the child. The school will also work with relevant external agencies to support individual needs.

TRAVELLING TO BLUNDELL'S

MINIBUS ROUTES

The School's own minibuses transport pupils to and from school on a daily basis from a wide range of destinations. Places are booked at the start of each academic year but places may be available at shorter notice on request. The charge made for this service is added to the pupil's school bill at the end of each term. The current charge is £5 per journey. Further details can be obtained by contacting transport@blundells.org

It should be noted that minibuses **do not run** on Wednesday and Saturday afternoons or on the days when Half Term starts or term ends.



Routes for 2023/2024*	Departure/Collection Point	Morning	Evening
HEATHFIELD	Heathfield (ATS Depot) - Newton Abbot pick up	7.25 am	6.30 pm
	Costa/McDonalds	7.40 am	6.15 pm
M5	Sadlers Arms Lymptone	7.10 am	6.45 pm
	Dart's Farm	7.30 am	6.25 pm
CULLOMPTON	Cullompton	8.00 am	5.55 pm
BARNSTAPLE	Tesco Car Park	7.30 am	6.30 pm
	South Molton (Mole Valley Farmers)	7.40 am	6.15 pm
	Moortown Cross (Picnic/Service Station)	7.55 am	6.00 pm
EXETER VALLEY	St David's Station	7.50 am	6.15 pm
	Stoke Canon	8.00 am	6.05 pm
	Ruffwell Inn	8.05 am	6.00 pm
TAUNTON	Galmington Trading Estate / Topps Tiles	7.30 am	6.30 pm
WELLINGTON	Travel Lodge / Skylark Car Park	7.40 am	6.20 pm
	Whiteball Garage	7.50 am	6.10 pm
CREDITON	Devonshire Dumpling Car Park	7.30 am	6.45 pm
	Morrison's Car Park	7.45 am	6.30 pm
	Cadbury Cross	7.50 am	6.15 pm
SIDMOUTH	Sidford Car Park	7.15 am	6.45 pm
	Hare & Hounds, Sidford	7.25 am	6.35 pm
HONITON	Heathpark Service Station/LIDL Car Park	7.35 am	6.30 pm
	Daisy Mount	7.45 am	6.20 pm
DULVERTON	Exmoor House Car Park	7.45 am	6.15 pm
	Bampton Main Street	8.00 am	6.05 pm

*All routes are run subject to demand

FREQUENTLY ASKED QUESTIONS

HOW BIG IS THE SCHOOL?

Blundell's Prep School is a medium size school of approximately 230 pupils. It caters for pupils aged from 3 to 11 years old.

WHAT ARE THE CLASS SIZES?

Blundell's Prep offers small class sizes to ensure that each child receives high quality individual care. Our class sizes range from 10 to 19 depending on year group and the School has the flexibility to increase the number of classes to enable children to be taught in smaller groups should numbers in the school increase.

WHAT AGE CAN MY CHILD START?

Your child may start in our Nursery in the term they turn 3. We offer Taster Days before a child starts to ensure that their transition into School is easy.

DOES MY CHILD HAVE TO START AT THE BEGINNING OF THE ACADEMIC YEAR?

Although the majority of children do join at the start of the academic year we do understand that a change of house or other circumstances can mean that a family may not be in a position to join us until later on in the year. Therefore, children are welcome to join us at any time during the year.

DO MOST CHILDREN LIVE LOCALLY?

Our children come from quite a wide area across Devon and Somerset. Some parents car share and we have a few who walk in but the majority do live in Tiverton and the surrounding villages whilst others live a long way out.

DO YOU OFFER A MINIBUS SERVICE?

Children attend Blundell's Preparatory School from quite a wide area. We are able to offer a comprehensive bus service in tandem with our Senior School.

HOW MUCH PREP WILL MY CHILD HAVE?

Our School day is busy, long and productive and homework is normally used to reinforce material already learned in class. In their early years the focus will be on reading and by Year 2 spellings and some practical maths activities will be included. During Years 3 and 4 reading, spellings and times-tables are the general requirements. More structured homework can be expected in Years 5 and 6 where 15 minutes of reading and one 30 minute Prep is set each night.

WHAT PROVISION IS THERE FOR BEFORE SCHOOL AND AFTER SCHOOL CARE?

Children are welcome to enter the School from 8.00 am each morning and are supervised until School commences at 8.30 am. Blundell's Prep offers an extensive range of clubs, many of which there is no charge for. Provision for after school care is available until 6.00 pm.

DO YOU CATER FOR CHILDREN WITH SPECIAL NEEDS?

Blundell's Prep School is able to offer Learning Support during a lesson and on a one-to-one basis for a small number of children with moderate learning difficulties. Our Head Master, Mr Southgate, would be happy to talk to parents who have concerns about their child's progress during a parental visit to the School.

HOW DO YOU SUPPORT CHILDREN WHO ARE ABLE AND TALENTED?

Those who have been identified as able and talented are given opportunities within all subject areas and through extra-curricular activities to use and develop their gifts and talents to fulfil their potential.

CAN MY CHILD LEARN AN INSTRUMENT?

At Blundell's Prep School we pride ourselves on the range of instruments on offer to our children. A wide range of lunch time clubs are available including Orchestra, Strings Group and Brass Club where children can further hone their skills by playing as part of a group. Choir is available for children each Tuesday and we also offer individual Speech and Drama lessons.

DO WE NEED TO PROVIDE LUNCH OR SNACKS?

Not at all as we provide a choice of hot lunch or a salad each day along with choices of a hot pudding, yoghurt and fresh fruit. Our aim is to provide children with a well-balanced, nutritional diet and snacks are offered during the day and include fresh fruit and bread sticks. For those staying to after school clubs, sandwiches and fruit are available. Special dietary needs are also catered for.

HOW IS MY CHILD KEPT SAFE AT SCHOOL?

We have a thorough procedure for ensuring the safety of the children in our care. Health and safety checks are carried out regularly and staff are kept up-to-date with First Aid Training, child protection training and carrying out risk assessments. The safety and happiness of the children is extremely important to us.

WHAT IS YOUR POLICY ON BULLYING?

We have a very effective bullying policy and any bullying issues are resolved quickly and discreetly. Our School policies may be accessed on our website.

HOW DO WE COMMUNICATE WITH PARENTS?

We operate a system whereby parents can meet, email or talk by telephone to staff in order to discuss day-to-day concerns and their child's progress. In addition we hold informal coffee mornings and a weekly iLetter to keep parents up-to-date with events at school. More formal feedback is given through Parents' evenings, Effort and Attainment Grades and detailed, written reports.

HOW ARE NEW CHILDREN HELPED TO INTEGRATE?

We pride ourselves on enabling children to settle in quickly. All staff take the time to make sure that new children feel part of each class and are supported not only in their learning but in all areas of school life. Each child is assigned a couple of buddies to take care of them during their first few weeks of school and there is regular contact between parents and their child's Form Tutor.

WHAT FACILITIES DO YOU HAVE?

We have modern purpose-built building with excellent facilities and resources including a new Science Lab, Food Technology room and new Dance Studio. Our pupils are also able to make use of some of the outstanding facilities that our senior school has to offer.

DO CHILDREN LEARN ANOTHER LANGUAGE?

All our children learn French as part of the curriculum from Nursery to Year 6 and are taught by a specialist Modern Foreign languages teacher.

DO CHILDREN GO ON RESIDENTIAL TRIPS?

Children in the Prep School enjoy the following summer term residential trips. **Year 6** children enjoy a three night residential trip, involving leadership and challenge. **Year 5** have a three night residential outward bound trip to bond them as a group and team, and to prepare them for leadership and responsibility during their final year at the Prep School. **Year 4** take part in a two night trip to Folly Farm where they challenge themselves to the full and enjoy themselves thoroughly. **Year 3** join in with a one night residential course where they begin their understanding of how to care for themselves away from home.

HOW DO YOU PERFORM ON THE GAMES FIELD?

Blundell's is renowned for its sporting prowess with all of our boys and girls being given the opportunity to represent the school against the leading teams in the South West and beyond. Although we enjoy winning it is playing the game well which matters most. Participation for all is important and every child will represent the school in a range of sports during their time at our School.

IS THERE SATURDAY MORNING SCHOOL?

Blundell's Prep School does not operate Saturday School. For those children joining the Senior School this currently commences in Year 9.

IS THERE A LINK BETWEEN THE PREP SCHOOL AND THE SENIOR SCHOOL?

The link between the Prep School and the Senior School is very close and very strong. The majority of the children move from the Prep School through to the Senior School although that is not the case with all children. Many of the facilities are shared between the School's including the two astro turf pitches, Ondaatje Theatre, the Sports Hall and the beautiful chapel. The two schools also join up for concerts throughout the year. The Senior Leadership teams meet regularly and the school shares the same Board of Governors although the Prep School does have its own committee which is made up of members of the Full Board.

TERM DATES 2023-24

TERM	BEGINS	HALF-TERM	ENDS
AUTUMN 2023	Thursday 7th September	Friday 20th October 3.40 pm Pre-Prep / 4.30 pm Prep - Sunday 5th November There are no after school clubs in the Pre-Prep and no prep or after school clubs in the Prep School at the start of half term.	Wednesday 13th December 3.40 pm Pre-Prep / 4.00 pm Prep There are no after school clubs in the Pre-Prep and no prep or after school clubs in the Prep School on the last day of term.
SPRING 2024	Thursday 4th January	Friday 9th February 3.40 pm Pre-Prep / 4.30 pm Prep - Sunday 18th February There are no after school clubs in the Pre-Prep and no prep or after school clubs in the Prep School at the start of half term.	Wednesday 27th March 3.40 pm Pre-Prep / 4.00 pm Prep There are no after school clubs in the Pre-Prep and no prep or after school clubs in the Prep School on the last day of term.
SUMMER 2024	Tuesday 17th April	Friday 24th May 3.40 pm Pre-Prep / 4.30 pm Prep - Sunday 2nd June There are no after school clubs in the Pre-Prep and no prep or after school clubs in the Prep School at the start of half term.	Friday 5th July 4.30pm 12.00 noon Pre-Prep and Prep There are no after school clubs in the Pre-Prep and no prep or after school clubs in the Prep School on the last day of term.

Holiday in term time is only sanctioned for exceptional circumstances and an application can only be made in writing or by email. The request will only be authorised if deemed appropriate by the Head Master.

POLICIES

Schools are required to publish their Child Protection & Safeguarding policy on their websites and certain other information must be made available to parents. In the interests of transparency and hopefully to make it easier, we have decided to put the following policies and information on the school website. This information is also available for you to consult in school or can be sent to you upon request.

[Accessibility](#)

[Admissions](#)

[Aims and Values](#)

[Anti-Bullying](#)

[Behaviour](#)

[Collection](#)

[Complaints](#)

[Curriculum](#)

[Data Protection](#)

[Equal opportunities](#)

[First Aid](#)

[Food Allergies and intolerances statement](#)

[Health and Safety](#)

[Intimate Care](#)

[Missing Pupil](#)

[Relationship & Sex Education](#)

[Safeguarding](#)

[Special Educational Needs](#)

[Supervision of Pupils](#)

USEFUL CONTACTS

PREP SCHOOL OFFICE

Tel: 01884 252393
Email: prep@blundells.org

PRE-PREP SCHOOL OFFICE

Tel: 01884 232346
Email: preprephead@blundells.org

HEAD MASTER

MR ANDY SOUTHGATE

HEAD'S PA

Tel: 01884 232315
Email: prephm@blundells.org

DEPUTY HEAD & DESIGNATED SAFEGUARDING LEAD

MR SIMON HOWKINS

Tel: 01884 232381
Email: sph@blundells.org

HEAD OF PRE-PREP

MRS LAURA CLIFFORD

Tel: 01884 232346
Email: llc@blundells.org

ASSISTANT HEAD - ASSESSMENT AND REPORTING

MR LEE MOORE

Email: lpm@blundells.org

ASSISTANT HEAD - CURRICULUM

MR DAN MORRIS

Email: djm@blundells.org

SENCO

MRS SUE CLARK

Email: sjc@blundells.org

ADMISSIONS

Tel: 01884 252393
Email: prep@blundells.org

BURSARY

Tel: 01884 252232
Fax: 01884 252955
Email: bursar@blundells.org

SCHOOL SHOP

Tel: 01884 232316
Email: shop@blundells.org

TRANSPORT

Tel: 01884 232378
Email: d.driver@blundells.org

CHAIRMAN OF THE GOVERNORS

via the Bursar (Clerk to the Governors)

Tel: 01884 232309
Email: bursar@blundells.org

DEVELOPMENT OFFICE

Tel: 01884 232324
Email: b.boswell@blundells.org

SENIOR LEADERSHIP TEAM

Head Master

Deputy Head

Head of Pre-Prep

Assistant Head - Reporting & Assessment

Assistant Head - Curriculum

Mr A D Southgate, BA Ed (Hons)

Mr S P Howkins, BA Ed (Hons)

Mrs L L Clifford, BEd (Hons)

Mr Lee Moore, BA (Hons), PGCE

Mr Daniel Morris BSc (Hons) Mathematical Sciences, PGCE

ADMINISTRATIVE STAFF

Head Master's PA

Administrator - Prep

Administrator - Pre-Prep

Miss Beverley Stone

Miss Gloria Butt

Mrs Louise Lewis

Blundell's Preparatory School
Milestones House
Blundell's Road
Tiverton
Devon
EX16 4DT

Tel: 01884 252393
E.mail: prep@blundells.org

www.blundells.org/prep

